

JobPack® LiVE Manufacturing



MAZAK QT30




Last Status Change
12/14/2011 4:41 AM

Operator
Paul Lane

Set up - Tools

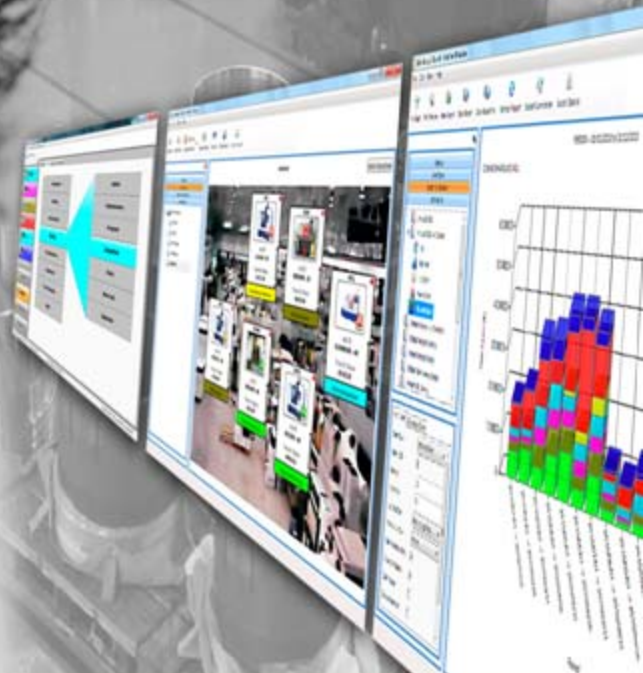
TURNCELL



Last Status Change
1/7/2011 10:05 AM

Operator
Peter Smith

IN Production



LiVE Machine Status

LiVE Manufacturing technology helps companies both large and small accelerate CNC machine ROI and achieve manufacturing efficiencies through the capture of accurate, real data in a graphical – digital format that is both easy to interpret and make decisions on.

JobPack Machine Monitoring is scalable And multi functional, with ultra fast access and report routines that work effortlessly. While you go about your main task and job-function, JobPack is at work collecting performance and non-performance data, to provide you With real information in an easy to read graphical report for Historical Analysis, Trend Analysis and Real Time Event Status. JobPack empowers all Managers and staff supervisors with

real facts, to fuel effective engineering and production decisions to improve machine up time and eliminate none productive events.



- Reports are available instantly and the format can be customized to suit customer requirements.
- All data is store in a SQL database and can be made available and HTML for Net reporting, via web servers and PDA / smart phone devices.
- JobPack LiVE Manufacturing provides a high level of functionality with the benefit of simple configuration and ease of use.

The results are unquestionable as the data is real, accurate and immediately available, on demand, with the click of a mouse!

JobPack LiVE Manufacturing produces on-demand graphical reports based on user defined criteria. All reports can be viewed instantly, and the browse feature allows users to page back and forward from the report date by shift, day, week or month, and see instantly the comparisons between machines, work centers, and time periods.

Instant Reports

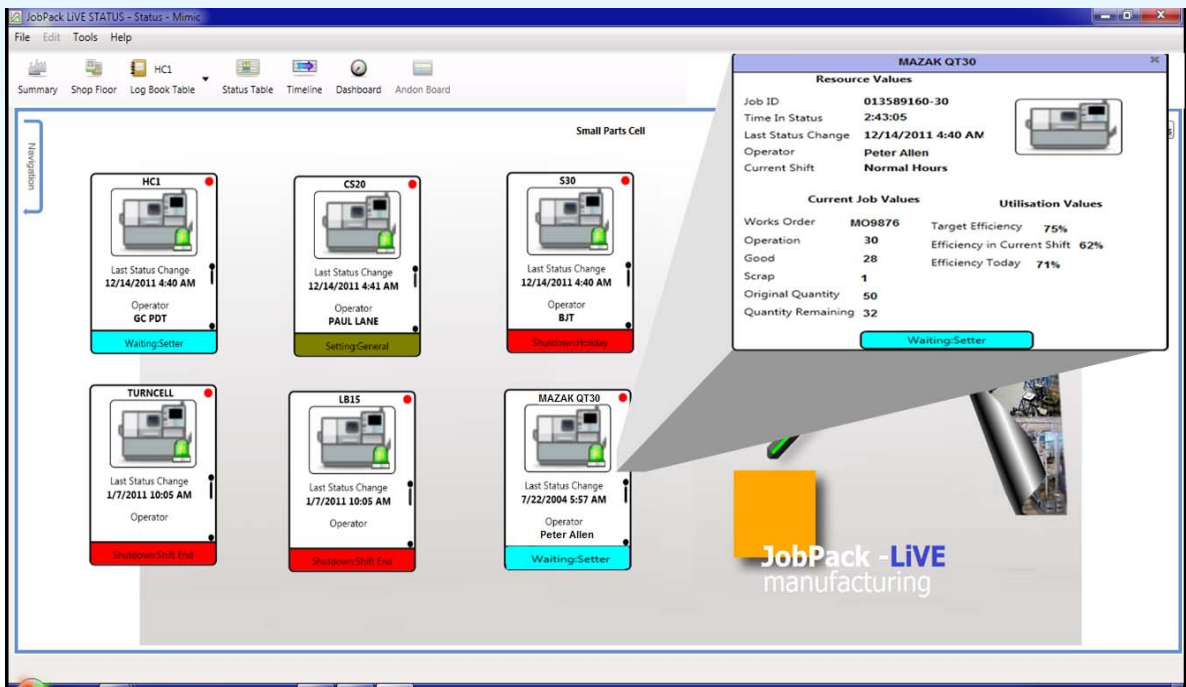
Machine specific reports based on individual Machine events and non-production reasons are a click away, and available in real time, **instantly!**

Flexibility

All events, both automatic and manual are easily defined, and can be modified any time.



REAL TIME MACHINE STATUS



The screenshot displays the JobPack LiVE Manufacturing software interface. The main dashboard shows a grid of machine status cards for various machines in a 'Small Parts Cell'. Each card includes a machine icon, name, last status change, operator, and a color-coded status bar (e.g., 'Waiting-Setter', 'Setting-General', 'Shutdown-Holiday').

A detailed report for the MAZAK QT30 machine is shown in a callout window. The report includes the following data:

Resource Values	
Job ID	013589160-30
Time In Status	2:43:05
Last Status Change	12/14/2011 4:40 AM
Operator	Peter Allen
Current Shift	Normal Hours

Current Job Values		Utilisation Values	
Works Order	MO9876	Target Efficiency	75%
Operation	30	Efficiency in Current Shift	62%
Good	28	Efficiency Today	71%
Scrap	1		
Original Quantity	50		
Quantity Remaining	32		

The interface also features a navigation menu on the left and a toolbar at the top with options like Summary, Shop Floor, Log Book Table, Status Table, Timeline, Dashboard, and Andon Board.

Activity logs track specific down time reasons for preventative maintenance, provide machine run hours with the ability to advise via pre-configured emails when specific machine hours have been used or if a machine is "down" to activate "action-alarms"

JobPack® Operator Input. Manual Data Collection provides the ability to collect data, events, and job / work order information from shop floor operators. Set up is easy and fast allowing menu configuration for operator input. This provides a comprehensive ability to react to new and changing situations as they occur. Any non-machine related stoppage reason, or event can be defined and setup for operator input easily and fast.

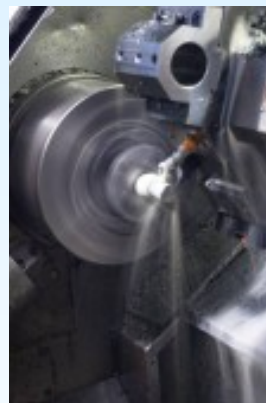


- Compare Machines**
- Review Cell Utilization**
- Report by Month, week, day**
- Review Trends - Reasons**
- Historical Performance**
- Current Status**
- Status ALARMS!**

Supervisors – LiVE Manufacturing provides an instant Real Time look at all shop floor machines and assets. LiVE Manufacturing shows what machines are in production, what machines are not in production, and if not, WHY!

Production Manager - JobPack provides data And manufacturing performance reports, including a comparison of actual production time Vs the planned and estimated time.

Engineering Manager - JobPack provides historical analysis of machine utilization, comparisons of work by work centers, shifts, and jobs.



- OEE reports by:**
- Plant**
- Department**
- Machine-Group**
- Machine**
- Shift**
- Operator**



Easy to use, operator menu input for non-machine related stoppage

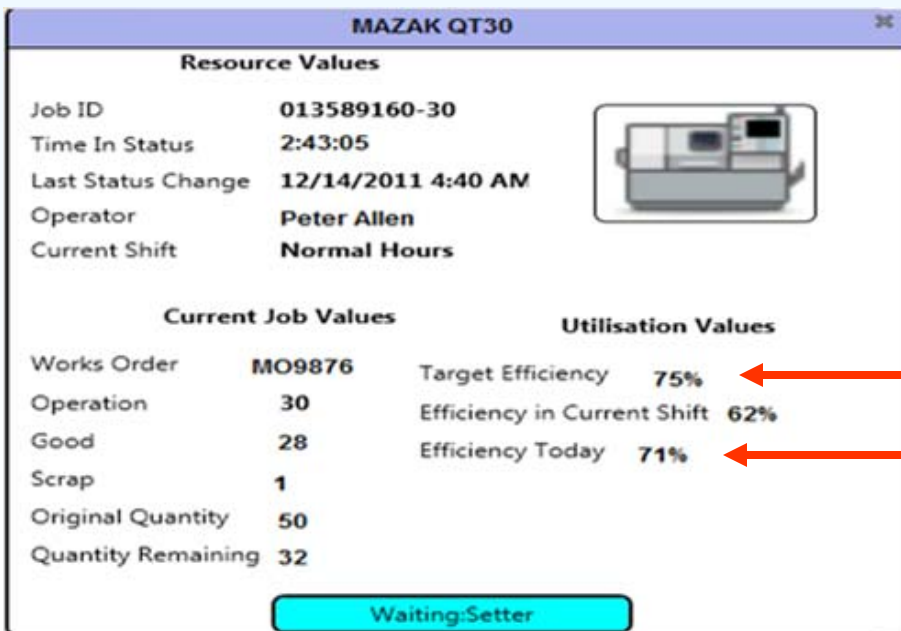
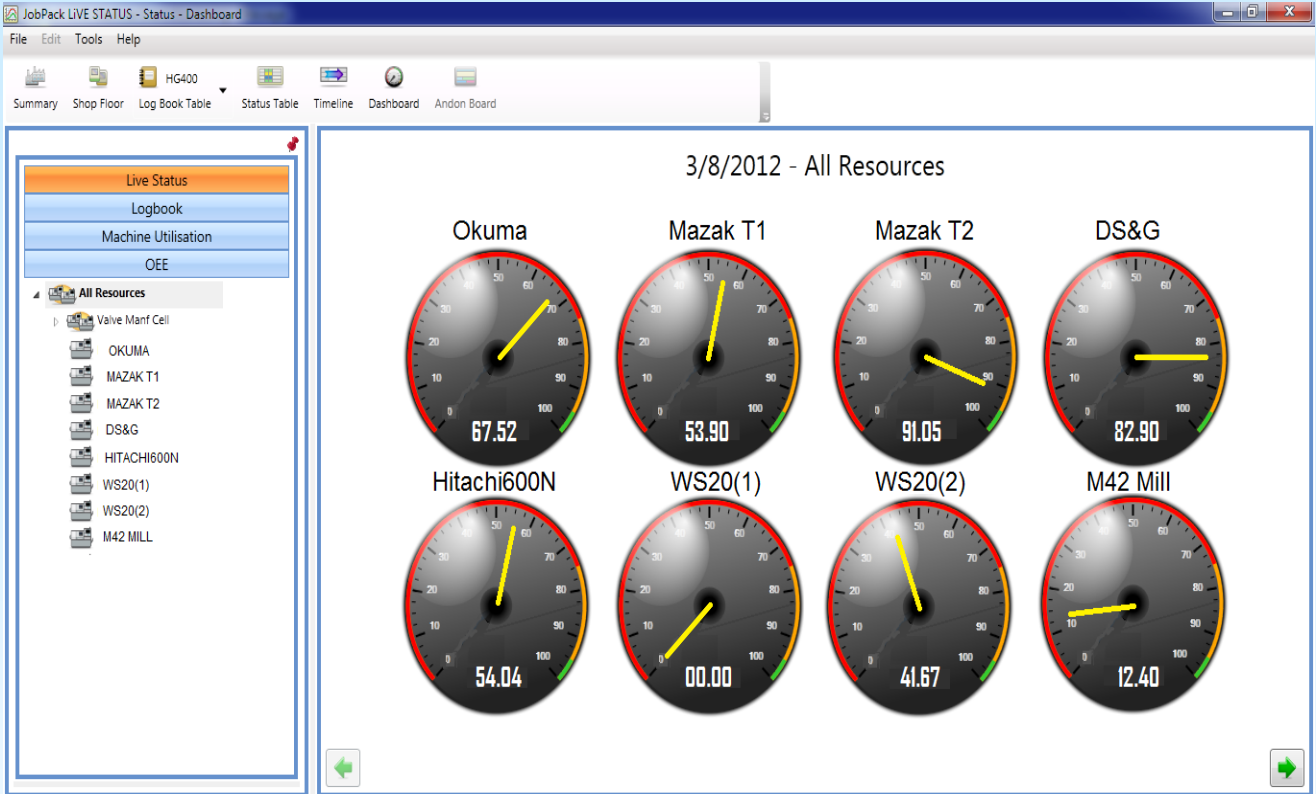
A setup Matrix of 8 Main Reasons (for Stoppage & Non-Production events) linked to 8 sub reasons for specifics i.e. Setup, Setup-Fixtures, provides 64 user definable operator menu inputs. An operator menu input can trigger a digital output via the ICP-CON unit, start a scripted sequence, call a pager, or autodial a cell phone, and even start a defined program to run.



Graphical reports on ANY event -
 By Machine
 By Job
 By Month
 By Week
 By Day
 By Shift

Dramatic impact of Real Time Displays

JobPack LiVE Manufacturing provides real time event status of all machinery with the added benefit of efficiency calculated display for current shift, in real time.



The **BIG** Question...

...Would this data be useful to you?

Over 18 years experience of development, sales, and support of manufacturing systems ensures JobPack® Inc has the expertise and knowledge base to provide complete turnkey installations, training, and after sales support services.

JobPack® provides growth without cost penalties for customers who have the requirement to start at an entry level and incrementally build to establish a complete manufacturing solution.

